

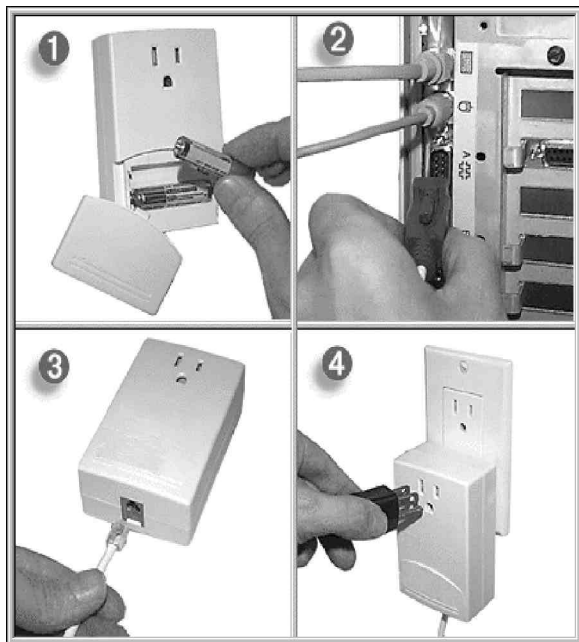
APPLICATIONS - COMPUTER INTERFACES

COMPUTER INTERFACES

ACTIVEHOME CONTROLLER

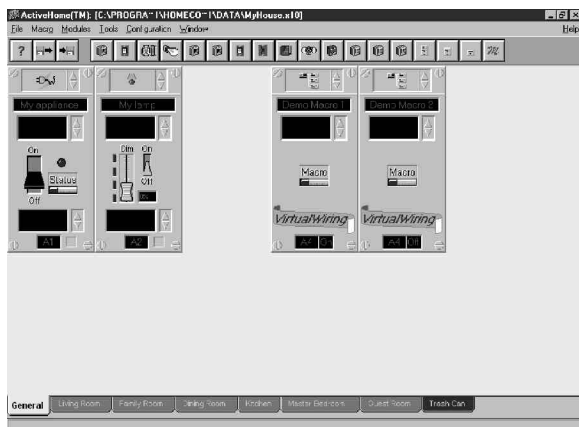
The CM11A Computer Interface

The Interface connects to your computer via a standard 9-pin serial port and is the piece of hardware that sends the actual signals to X10 Modules installed throughout your home.



The ActiveHome software provides a user-friendly graphical user interface (GUI) for communicating with the Interface.

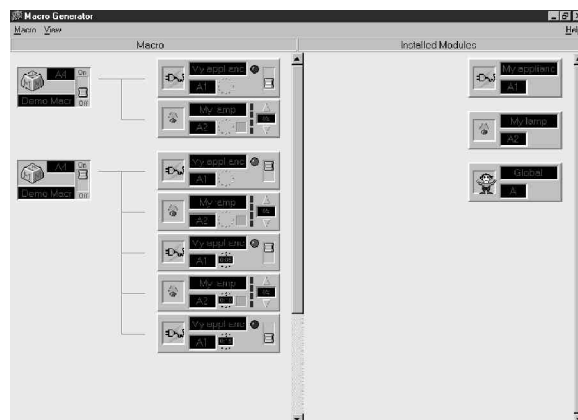
Clicking the switch on the graphical module on the screen sends the appropriate commands to the Interface where they are inter-



preted and executed. The Interface transmits the appropriate commands onto the household AC wiring causing the corresponding X10 PRO Module to turn ON/OFF, BRIGHTEN/DIM.

The Interface is capable of controlling all 256 X10 Commands. Each module defined in ActiveHome has a House Code and a Unit Code setting. These codes must coincide with the physical House Code and a Unit Code settings on the actual X10 PRO Modules installed throughout your home.

The Interface is a Two-Way device which means it can transmit AND receive X10 signals over your house wiring. The ActiveHome software allows you to graphically set up Macros which perform a series of events when the Interface receives a command over your house wiring from any X10 Controller.



Virtual Wiring is the most powerful feature of the ActiveHome software! It lets you set up scenes or sequences of events to happen from any location in your home. These scenes or sequences (known as Macros) can be extremely powerful.

For example:

When you arrive home, you can press one button on an X10 wireless keychain remote control from your car as you approach the house. This signal is received by an X10 Base Transceiver (PAT01) that transmits a code onto your house wiring.

APPLICATIONS - COMPUTER INTERFACES

The CM11A Two-Way Home Automation Interface receives this code and initiates the Macro you have set up. This Macro then turns on your driveway lights, turns on your porch light, turns on your hallway light, turns on your stereo, and 5 minutes later turns off the driveway lights and the porch light - all from a single button press!

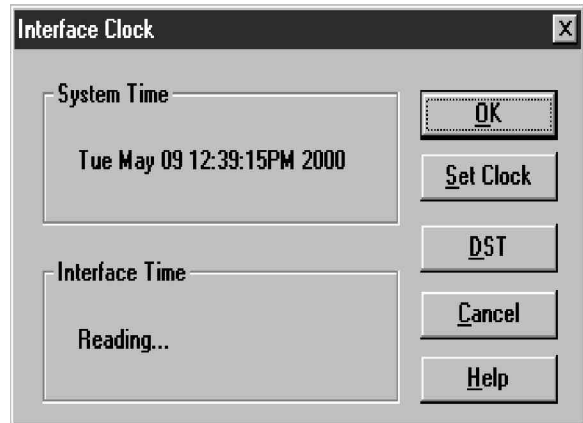
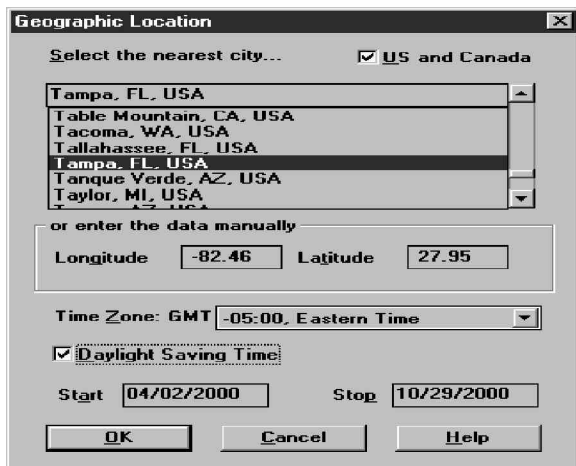
Another Macro can turn off the downstairs family room lamps, dim the bedroom lamp, turn on the bedside radio and one hour later turn off the bedside radio - all from pressing a single button on any X10 Controller as you retire for the night.

There is no limit to the number of lights and appliances that can be controlled by a Macro, and there is no limit to the number of Macros you can set up!

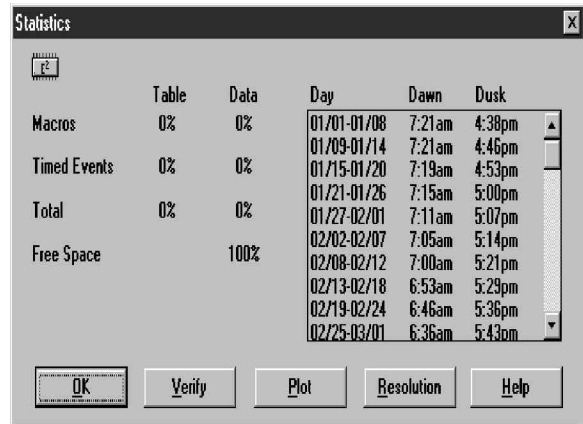
The software is easy to operate, being that the on-screen modules resemble the actual devices. You do not have to be a computer programmer or need to write "code" to program this Interface.

Lets take a look at some sample screens to give you some idea of the programming.

We have already seen the Main Graphical Interface page and the Macro Editor Page, but there are a few pages that need specific input from the user to identify Location, Time and Time Zone, plus Daylight Savings activity.



The Interface will need to take all of the previous information and calculate a formula to know when Dawn and Dusk take place in your area. This can be viewed and altered on this page.

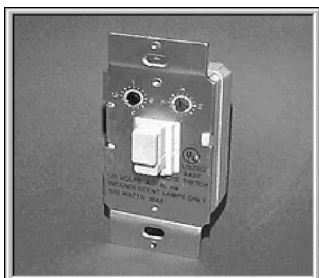


If you have the resolution set to 24, the Interface will recalculate Dusk and Dawn 24 times in a year.

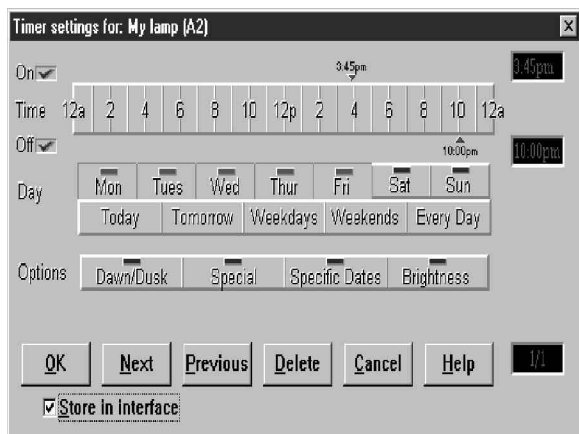
This can be lessened to 12, for example, to increase storage in the Interface for larger more complex program schedules.

APPLICATIONS - COMPUTER INTERFACES

After you have set up the basic information and your on screen modules have been selected....



You can bring up a timer screen that allows you to set varying ON/OFF, BRIGHT/DIM



and/or DUSK and DAWN schedules.

Now download the program schedule to the Interface and the CM11A runs your entire routine with the computer shut off.

Any Macro that you have created can be triggered either by the time setting you gave it, or from an X10 Trigger on the powerline.

LETS TAKE A MOMENT AND RECAP

In the Applications section of this manual, we described many functions of Macros in relationship to single X10 Commands.

You may recall the numerous mention of the PHR04 RF Wireless Keychain Remote. The Remote only has the ability to control two sequential House and Unit Codes, ON/OFF.

Now each of the transmissions can be triggers to the ActiveHome Software in the CM11A.

Whether you are transmitting an ON or an OFF, each of those commands can be programmed into the CM11A to be two distinct Macros, with 10, 20 or more events (pre-programmed).

The PHT02 Mini-Timer and the XPPC Seven Day Event Timer are great for 24 hours or weekly programming, but the CM11A can program to cover a yearly schedule.

Imagine all those people that never take down their Holiday Lighting, now the CM11A can tell the lights, at the proper time of the year, when to turn ON!

XPT Wall Based Transmitters now become SCENE CONTROLLERS instead of individual Unit Controllers.

Program the CM11A to respond to the triggers of a 4 Button (XP4 Keypad mounted to an XPT) to become an EIGHT SCENE MOOD CONTROLLER. Possible settings are, Coming Home, Evening Lights, Dinner Lighting, Theatre Mode, Going to Bed, Good Morning Lighting and lets not forget HVAC settings for Air-conditioning and Heating Moods. (Program the CM11A to control the PDT20 Thermostat Controller from a trigger).

Do you recall the earlier attempt at humor with the homeowner coming home and forgetting to close the garage door, shutting the lights and running the sprinkler?

Now he can make all of that automation happen just like we described!

APPLICATIONS - COMPUTER INTERFACES

Plus, lets not forget all the security functions that a Macro can provide.

When the Outside Motion Sensor Floodlight PHS01 detects an intruder, not only will it light itself and up to four other devices, but now you could use the PHS01 as a Trigger to a complex array of devices that can allow cameras to be turned on, video recorders to start, etc... The possibilities are endless.

How about that alarm panel that only gives you a bell output voltage? As previously described, connect a PSC01 Powerflash Unit to the voltage and use the X10 Trigger that it sends to initiate a lighting and warning Macro through the CM11A. No intruder is going to hang around when various lights and sounds are occurring in a residence.

Lets not forget all the load shedding during the day that can save you money on your utility bill.

Let the X10 Trigger from an alarm (armed in the away mode) turn off the HVAC, (or set it back), turn off the water heater, turn OFF the lights and close the garage door.

ALL FROM THE PUSH OF
ONE BUTTON!